



East Coast Bullbars (ECB Pty Ltd)

Tel: 07 3897 5700

Fax: 07 3283 1168

ecb@ecb.com.au www.ecb.com.au

29 Snook St
Clontarf QLD 4019
Australia

Po Box 122
Margate QLD 4019
Australia

8T78SY / NB6T78SY / NBT78SY

REPLACES: 08.09.05

REVISED: 29.06.10

FITTING INSTRUCTIONS

TOYOTA HIACE SUPER LONG WHEEL BASE 03/05- TYPE 8, 63mm SERIES 2 NUDGE BAR and 76mm NUDGE BAR VEHICLE FRONTAL PROTECTION SYSTEM (VFPS) FOR AIR BAG & ADR COMPLIANT VEHICLES

Check installation hardware before commencing.

1. Bumper cover is to be removed: **Remove plastic step infills** four plastic clips per infill, **see figure 1. Lift bonnet and remove grille** two PK self-tappers and two plastic clips at top. Pull grille out at top to access fixed grille clips into top of bumper cover. Release clips and pull grille forward. Remove one plastic clip from top of bumper cover, remove two plastic clips at bottom of side returns (each side) and three plastic clips from lower bumper cover, and remove three 10mm head bolts from centre air intake area of bumper cover. Pull bumper cover out at side returns to release off clips, **see figure 2.** Pull forward off locating tabs (two) near lower inner headlight area. **See figure 3.**
2. Remove steel bumper cover support from chassis. Six 14mm head bolts. **See figure 4.**
3. Flatten two mounting tabs (each side) at front of chassis. **See figure 5.**
4. Remove one 12mm head bolt (each side) from chassis. **See figure 5.**
5. Fit and level steel mounting brackets (supplied) to front of chassis. Use M8 x 30 bolt, flat washer and spring washer (supplied) into original 8mm captive nut. Align all 10mm captive nuts and towing bolt captive nuts, then ensure steel mounting brackets are set at correct measurement for protection bar to mount on outside of steel mounting brackets (check protection bar measurement) **TIGHTEN** M8 x 30 bolt. **See figures 6 and 7. NOTE:** Screw in original 14mm head bolts into each captive nut to ensure alignment. Then remove 14mm head bolts.
6. Refit steel bumper cover support over steel mounting brackets to front of chassis. Use original 14mm head bolts with flat and spring washers (supplied). **See figure 8. FINGER TIGHTEN ONLY.**
7. Feed one 3/8 x 1 ¼ bolt and flat washer (each side) (supplied) through steel bumper cover support and steel mounting bracket's. Use 3/8 flat washer, spring washer and nut (supplied) at bottom. **See figure 9. TIGHTEN original 14mm head bolts then 3/8 x 1 ¼ bolts and nuts.**
8. Using steel mounting brackets as a guide drill one 10mm hole (each side) through lower chassis rail. **See figure 10. Treat exposed metal with a rust inhibitor.**
9. Using 3/8 x 1 ¼ bolt with 200mm wire (supplied), bend wire to shape to allow bolt to pass through larger hole in chassis and out through drilled hole. **See figure 11.** Use 3/8 flat washer, spring washer and nut (supplied) **TIGHTEN.** Trim off excess wire and position so as no rattling will occur. **NOTE:** Ensure original towing bolt can be threaded into chassis. **See figure 12.**
10. Trim plastic bumper cover to fit over steel mounting brackets and for protection bar to position inside of bumper cover. **See figures 13 and 14.** Place masking tape or similar to protect bumper cover from tool marks. **NOTE:** Trim out with approximately same radius of tube for a neat appearance.
11. Refit bumper cover to vehicle. **See figure 15.**



**WORLD'S BEST
ALLOY BULLBARS**

East Coast Bullbars (ECB Pty Ltd)

Tel: 07 3897 5700

Fax: 07 3283 1168

ecb@ecb.com.au www.ecb.com.au

29 Snook St
Clontarf QLD 4019
Australia

Po Box 122
Margate QLD 4019
Australia

12. Refit grille and step infills.
13. Fit protection bar to outside of steel mounting brackets. Use 3/8 x 1 1/2 bolts, nuts and washers (supplied) for rear holes. Use 3/8 x 1 1/2 bolt, flat washer on 300mm wire (supplied) to access front holes. Use 3/8 flat washers, spring washers and nuts (supplied). **FINGER TIGHTEN ONLY.**
14. Align protection bar with vehicle. **See figures 16, 18 and 20** for side views and **figures 17, 19 and 21** for front views. **TIGHTEN ALL BOLTS/ NUTS. NOTE:** Protection bars do lay forward slightly. Trim off excess wire. **NOTE:** Bumper cover should be trimmed sufficient to have spanner access. **See figure 22**
15. **For 8T78SY and NB6T78SY ONLY:** Position number plate approximately 70mm down from original position. Use 8g x 20 PK self-drilling screws (supplied) in bumper cover and bumper cover support.

ENSURE THESE INSTRUCTIONS ARE LEFT WITH VEHICLE OWNER AND/OR OPERATOR

ENSURE NUMBER PLATE IS CLEARLY VISABLE

Note: When fitting/refitting the licence plate to the vehicle, ensure there is no obstruction to licence plate vision in accordance with local authorities. If required relocate licence plate to an alternate location.

Further VFPS Notes:

- a) Do not attach VFPS to the vehicle using anchorages not intended for this purpose (e.g. engine mounting bolts).
- b) Do not use this product for any vehicle make or model, other than those specified by the VFPS manufacturer.
- c) Do not remove the plaque or label from the VFPS.
- d) Do not modify the structure of the VFPS in any way.
- e) No accessory or fitment should project forward of the VFPS forward profile.
- f) **ENSURE THESE INSTRUCTIONS ARE LEFT WITH VEHICLE OWNER AND/OR OPERATOR.**

IMPORTANT INFORMATION

Periodically check bolts and nuts for correct tightness, especially if travelling on rough roads

FITTING KIT

2 – Steel mounting brackets.	2 – 3/8 x 1 1/4 bolts.
2 – M8 x 30 bolts.	2 – 3/8 x 1 1/2 bolts.
2 – M8 flat washers.	8 – 3/8 nuts.
2 – M8 spring washers.	18 – 3/8 flat washers.
2 – 3/8 x 1 1/4 bolts with 200mm wire only.	14 – 3/8 spring washers.
2 – 3/8 x 1 1/2 bolts with flat washers on 300mm wire.	2 – 8g x 20 PK self-drilling screws.



East Coast Bullbars (ECB Pty Ltd)

Tel: 07 3897 5700

Fax: 07 3283 1168

ecb@ecb.com.au www.ecb.com.au

WORLD'S BEST
ALLOY BULLBARS

29 Snook St
Clontarf QLD 4019
Australia

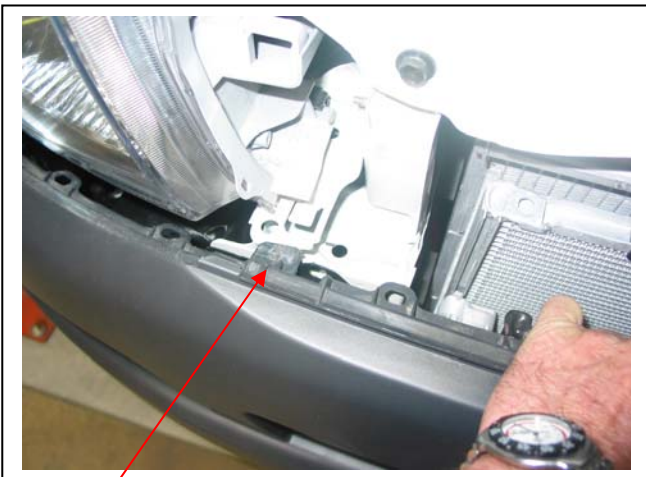
Po Box 122
Margate QLD 4019
Australia



Figure 1 – Shown removing passenger side step infill



Figure 2



Locating tabs

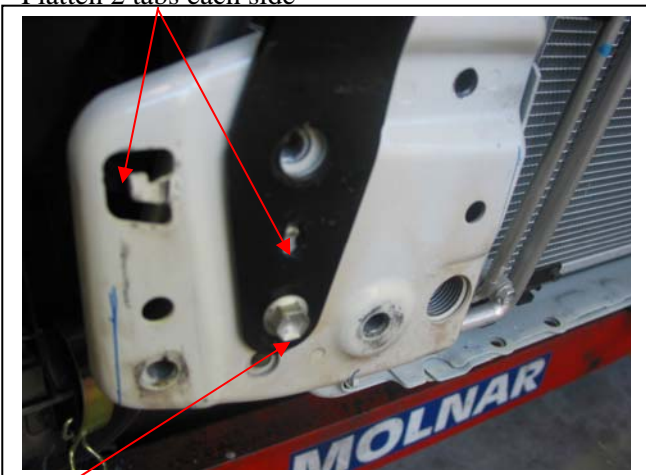
Figure 3



Steel bumper
cover support

Figure 4

Flatten 2 tabs each side



12mm head bolt Figure 5 – Driver's side shown
bolt

M8 x 30 bolt

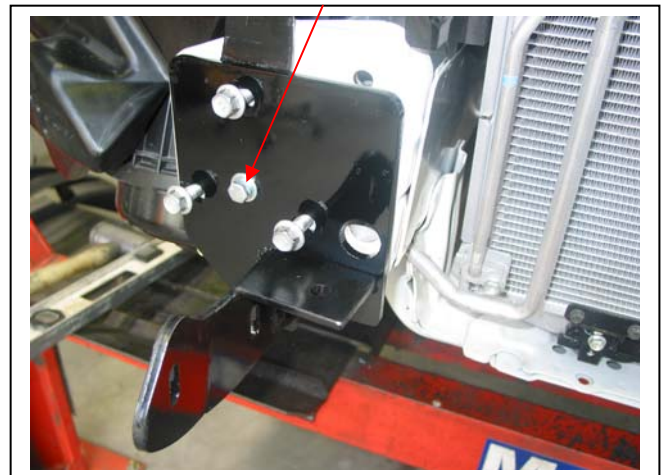


Figure 6 – Driver's side shown



East Coast Bullbars (ECB Pty Ltd)

Tel: 07 3897 5700

Fax: 07 3283 1168

ecb@ecb.com.au www.ecb.com.au

WORLD'S BEST
ALLOY BULLBARS

29 Snook St
Clontarf QLD 4019
Australia

Po Box 122
Margate QLD 4019
Australia



Figure 7



Figure 8



3/8 x 1 1/4 bolt/nut Figure 9



Figure 10 – Shown drilling passenger side chassis



Figure 11 – Driver's side shown 3/8 x 1 1/4 bolt/wire



Original towing bolt Figure 12



East Coast Bullbars (ECB Pty Ltd)

Tel: 07 3897 5700

Fax: 07 3283 1168

ecb@ecb.com.au www.ecb.com.au

WORLD'S BEST
ALLOY BULLBARS

29 Snook St
Clontarf QLD 4019
Australia

Po Box 122
Margate QLD 4019
Australia



Figure 13

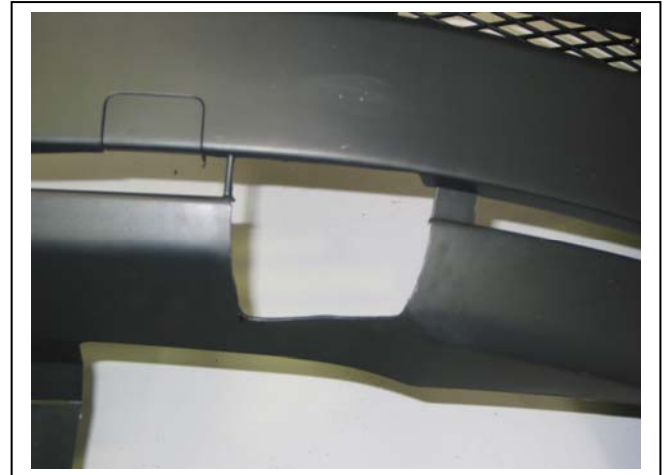


Figure 14 – Passenger side shown



Figure 15



Figure 16 – 76mm Nudge Bar side view shown



Figure 17 – 76mm Nudge Bar front view shown



Figure 18 – 63mm Series 2 Nudge Bar side view shown



East Coast Bullbars (ECB Pty Ltd)

Tel: 07 3897 5700

Fax: 07 3283 1168

ecb@ecb.com.au www.ecb.com.au

WORLD'S BEST
ALLOY BULLBARS

29 Snook St
Clontarf QLD 4019
Australia

Po Box 122
Margate QLD 4019
Australia



Figure 19 – 63mm Series 2 Nudge Bar front view shown



Figure 20 – Type 8 side view shown



Figure 21 – Type 8 front view shown



Figure 22



**WORLD'S BEST
ALLOY BULLBARS**

East Coast Bullbars (ECB Pty Ltd)

Tel: 07 3897 5700

Fax: 07 3283 1168

ecb@ecb.com.au www.ecb.com.au

29 Snook St
Clontarf QLD 4019
Australia

Po Box 122
Margate QLD 4019
Australia

We value your comments

Dear Fitter,

ECB would like to know how you went with the installation of this product. We value your comment and may need to contact you to clarify some details so please complete your contact details clearly.

We would appreciate if you could complete as many of the following details as possible.

Your Name:	Your contact No.
Product Part No.	Product Invoice No.
Product Description:	Make, model, and year of vehicle:
Product Work Order No.	Company your from/Company product purchased from:

Date of Fitment: ____/____/____

Was the fitting hardware supplied complete?

Yes

No

If no what was not supplied

Did the installation go well?

Yes

No

Please provide comments

Please draw diagrams if you need to.

Post to
Reply Paid 122
PO Box 122
Margate QLD 4019

Fax to
(07) 3283 1168



**WORLD'S BEST
ALLOY BULLBARS**

East Coast Bullbars (ECB Pty Ltd)

Tel: 07 3897 5700

Fax: 07 3283 1168

ecb@ecb.com.au www.ecb.com.au

29 Snook St
Clontarf QLD 4019
Australia

Po Box 122
Margate QLD 4019
Australia



WORLD'S BEST
ALLOY BULLBARS

East Coast Bullbars (ECB Pty Ltd)

Tel: 07 3897 5700

Fax: 07 3283 1168

ecb@ecb.com.au www.ecb.com.au

29 Snook St
Clontarf QLD 4019
Australia

Po Box 122
Margate QLD 4019
Australia

DESPATCH CHECKLIST 8T78SY / NB6T78SY / NBT78SY

Work Order #	
Finish:	
Transport:	
Due Date:	

- 2 – Steel mounting brackets.
- 1 – Bolt Kit.

**See other side of
this page for
photos of all
mounts**



Is this product “the best it can be” Yes _____ / _____
Wrapper's initials / Checker initials
 If NO fix before continuing

All parts checked and completed by:

Nut and bolts: _____ Date __/__/__

Order control: _____ Date __/__/__

Final wrap check: _____ Date __/__/__



**WORLD'S BEST
ALLOY BULLBARS**

East Coast Bullbars (ECB Pty Ltd)

Tel: 07 3897 5700

Fax: 07 3283 1168

ecb@ecb.com.au www.ecb.com.au

29 Snook St
Clontarf QLD 4019
Australia

Po Box 122
Margate QLD 4019
Australia

Pair of Steel mounting brackets
Angles different Left to Right

